



# Protocadherin-11 Polyclonal Antibody

<b>Catalog No</b>	YP-Ab-17068
<b>Isotype</b>	IgG
<b>Reactivity</b>	Human;Rat;Mouse;
<b>Applications</b>	IHC;IF;ELISA
<b>Gene Name</b>	PCDH11X/PCDH11Y
<b>Protein Name</b>	Protocadherin-11 X/Y-linked
<b>Immunogen</b>	The antiserum was produced against synthesized peptide derived from human PCDH-X/Y. AA range:531-580
<b>Specificity</b>	Protocadherin-11 Polyclonal Antibody detects endogenous levels of Protocadherin-11 protein.
<b>Formulation</b>	Liquid in PBS containing 50% glycerol, 0.5% BSA and 0.02% sodium azide.
<b>Source</b>	Polyclonal, Rabbit,IgG
<b>Purification</b>	The antibody was affinity-purified from rabbit antiserum by affinity-chromatography using epitope-specific immunogen.
<b>Dilution</b>	Immunohistochemistry: 1/100 - 1/300. Immunofluorescence: 1/200 - 1/1000. ELISA: 1/20000. Not yet tested in other applications.
<b>Concentration</b>	1 mg/ml
<b>Purity</b>	≥90%
<b>Storage Stability</b>	-20°C/1 year
<b>Synonyms</b>	PCDH11Y; PCDH11; PCDH22; PCDHY; Protocadherin-11 Y-linked; Protocadherin-11; Protocadherin on the Y chromosome; PCDH-Y; Protocadherin prostate cancer; Protocadherin-PC; Protocadherin-22; PCDH11X; KIAA1326; PCDH11; PCDHX; Protocadherin-11 X-
<b>Observed Band</b>	
<b>Cell Pathway</b>	Cell membrane ; Single-pass type I membrane protein .
<b>Tissue Specificity</b>	Expressed strongly in fetal brain and brain (cortex, amygdala, thalamus, substantia nigra, hippocampus, caudate nucleus and corpus callosum). Expressed at low level in testis. Expressed in apoptosis-resistant cells.
<b>Function</b>	alternative products:Additional isoforms seem to exist,disease:A chromosomal aberration involving PCDH11Y is a cause of multiple congenital abnormalities, including severe bilateral vesicoureteral reflux (VUR) with ureterovesical junction defects. Translocation t(Y;3)(p11;p12) with ROBO2.,function:Potential calcium-dependent cell-adhesion protein.,similarity:Contains 7 cadherin domains.,subunit:Interacts with CTNNB1.,tissue specificity:Expressed strongly in fetal brain and brain (cortex, amygdala, thalamus, substantia nigra, hippocampus, caudate nucleus and corpus callosum). Expressed at low level in testis. Expressed in apoptosis-resistant cells.,



## Background

This gene belongs to the protocadherin family, a subfamily of the cadherin superfamily. The encoded protein consists of an extracellular domain containing seven cadherin repeats, a transmembrane domain, and a cytoplasmic tail that differs from those of the classical cadherins. This gene is located on the Y chromosome in a block of X/Y homology and is very closely related to its paralog on the X chromosome. The protein is thought to play a role in cell-cell recognition during development of the central nervous system. Alternative splicing results in multiple transcript variants encoding different isoforms. [provided by RefSeq, Jul 2013],

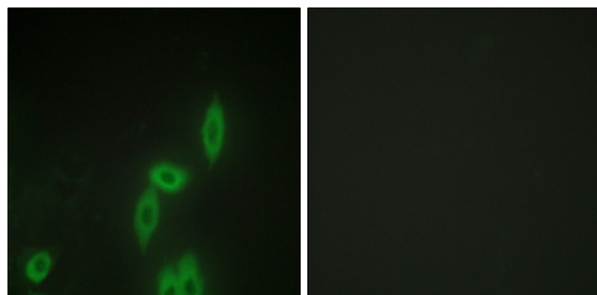
## matters needing attention

Avoid repeated freezing and thawing!

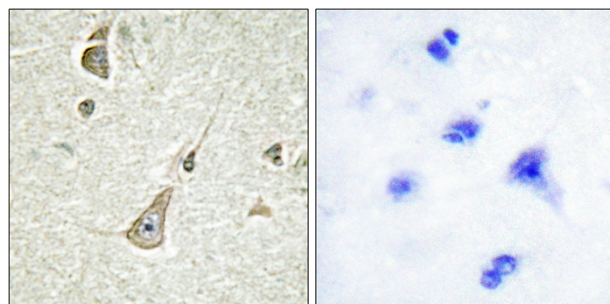
## Usage suggestions

This product can be used in immunological reaction related experiments. For more information, please consult technical personnel.

## Products Images



Immunofluorescence analysis of HepG2 cells, using PCDH-X/Y Antibody. The picture on the right is blocked with the synthesized peptide.



Immunohistochemistry analysis of paraffin-embedded human brain tissue, using PCDH-X/Y Antibody. The picture on the right is blocked with the synthesized peptide.